

# DT1056/DT1057 DIGITALKER™ Standard Vocabulary Kit

## General Description

The DIGITALKER™ is a speech synthesis system consisting of several N-channel MOS integrated circuits. It contains a speech processor chip (SPC) and speech ROM and when used with external filter, amplifier, and speaker, produces a system which generates high quality speech including the natural inflection and emphasis of the original speech. Male, female, and children's voices can be synthesized.

The SPC communicates with the speech ROM, which contains the compressed speech data as well as the frequency and amplitude data required for speech output. Up to 128k bits of speech data can be directly accessed.

With the addition of an external resistor, on-chip debounce is provided for use with a switch interface.

An interrupt is generated at the end of each speech sequence so that several sequences or words can be cascaded to form different speech expressions.

The DT1056/DT1057 is a standard DIGITALKER kit encoded with 131 separate and useful words (see the Master Word List Table I) and when used with the DT1050 Standard Vocabulary Kit, provides a library of 274 useful words. The words have been assigned discrete addresses, making it possible to output single words or words concatenated into phrases or even sentences.

The "voice" output of the DT1056/DT1057 is a highly intelligible male voice. The vocabulary is chosen so that it is applicable to many products and markets.

## Features

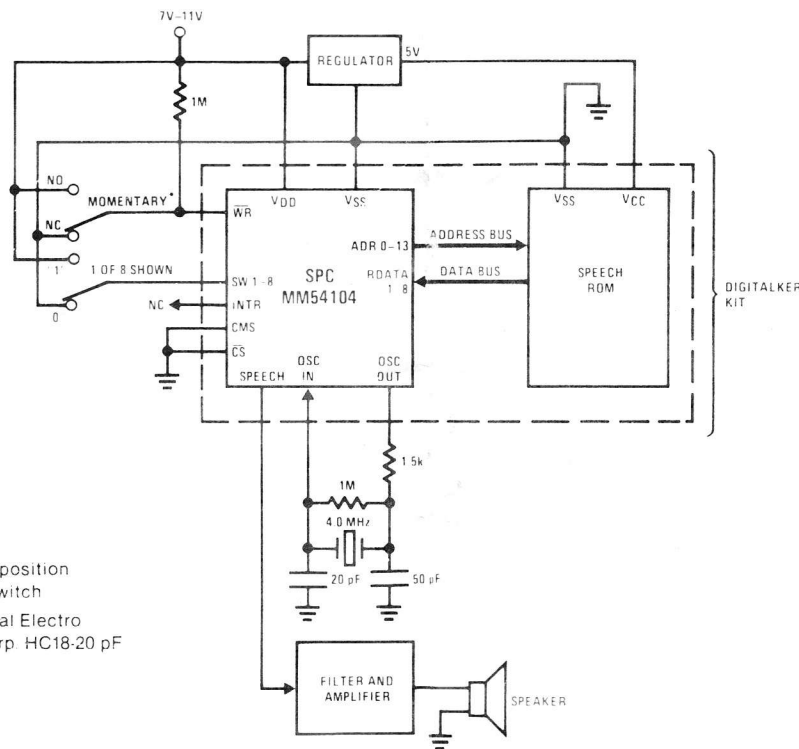
- Easily adaptable to DT1050 Standard Vocabulary Kit
- 131 useful words
- COPSTM and MICROBUS™ compatible
- Designed to be easily interfaced to other popular microprocessors
- Natural inflection and emphasis of original speech
- Addresses 128k bits of ROM directly
- TTL compatible
- On-chip switch debounce for interfacing to manual switches independent of a microprocessor
- Interrupt capability for cascading words or phrases
- Crystal controlled or externally driven oscillator
- Available in complete kit (DT1056) or speech ROMs only (DT1057)

## Applications

- Telecommunications
- Appliance
- Automotive
- Teaching aids
- Consumer products
- Clocks
- Language translation
- Annunciators

## Typical Applications

Minimum Configuration Using Switch Interface



\* Single pole 2 position momentary switch  
 \*\* 4.0 MHz crystal Electro Dynamics Corp. HC18-20 pF

## Absolute Maximum Ratings\*

Storage Temperature Range	-65°C to +150°C	Voltage at Any Pin	12V
Operating Temperature Range	0°C to 70°C	Operating Voltage Range, $V_{DD}-V_{SS}$	7V to 11V
$V_{DD}-V_{SS}$	12V	Lead Temperature (Soldering, 10 seconds)	300°C

## DC Electrical Characteristics\* $T_A = 0^\circ\text{C}$ to $70^\circ\text{C}$ , $V_{DD} = 7\text{V}-11\text{V}$ , $V_{SS} = 0\text{V}$ , unless otherwise specified.

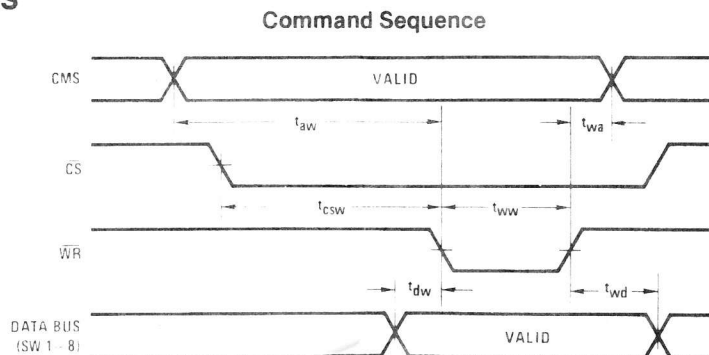
Symbol	Parameter	Conditions	Min	Typ	Max	Units
$V_{IL}$	Input Low Voltage		-0.3		0.8	V
$V_{IH}$	Input High Voltage		2.0		$V_{DD}$	V
$V_{OL}$	Output Low Voltage	$I_{OL} = 1.6\text{ mA}$			0.4	V
$V_{OH}$	Output High Voltage	$I_{OH} = -100\ \mu\text{A}$	2.4		5.0	V
$V_{ILX}$	Clock Input Low Voltage		-0.3		1.2	V
$V_{IHx}$	Clock Input High Voltage		5.5		$V_{DD}$	V
$I_{DD}$	Power Supply Current				45	mA
$I_{IL}$	Input Leakage				$\pm 10$	$\mu\text{A}$
$I_{ILX}$	Clock Input Leakage				$\pm 10$	$\mu\text{A}$
$V_S$	Silence Voltage			$0.45V_{DD}$		V
$V_{OUT}$	Peak to Peak Speech Output	$V_{DD} = 11\text{V}$		2.0		V
$R_{EXT}$	External Load on Speech Output	$R_{EXT}$ Connected Between Speech Output and $V_{SS}$	50			$\text{k}\Omega$

## AC Electrical Characteristics\* $T_A = 0^\circ\text{C}$ to $70^\circ\text{C}$ , $V_{DD} = 7\text{V}-11\text{V}$ , $V_{SS} = 0\text{V}$ , unless otherwise specified.

Symbol	Parameter	Min	Max	Units
$t_{aw}$	CMS Valid to Write Strobe	350		ns
$t_{csw}$	Chip Select ON to Write Strobe	310		ns
$t_{dw}$	Data Bus Valid to Write Strobe	50		ns
$t_{wa}$	CMS Hold Time after Write Strobe	50		ns
$t_{wd}$	Data Bus Hold Time after Write Strobe	100		ns
$t_{ww}$	Write Strobe Width (50% Point)	430		ns
$t_{red}$	$\overline{\text{ROMEN}}$ ON to Valid ROM Data		2	$\mu\text{s}$
$t_{wss}$	Write Strobe to Speech Output Delay		410	$\mu\text{s}$
$f_t$	External Clock Frequency	3.92	4.08	MHz

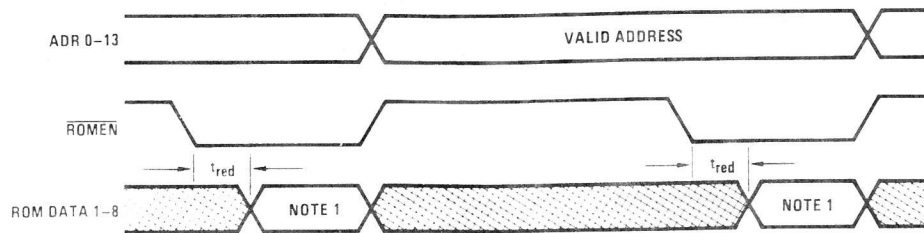
Note: Rise and fall times (10% to 90%) of MICROBUS signals should be 50 ns maximum.  
 \*SPC characteristics only. ROM characteristics covered by separate data sheet for MM52164.

## Timing Waveforms



## Timing Waveforms (Continued)

### ROM Data Timing



**Note 1:** ROM Data 1-8 can go valid any time after ADR0-13 changes, however it must be valid within the  $t_{red}$  spec and remain valid until  $\overline{ROMEN}$  goes high.

## Functional Description

The following describes the function of all SPC input and output pins.

**Note:** In the following descriptions, a low represents a logic 0 (0.4V nominal), and a high represents a logic 1 (2.4V nominal).

### INPUT SIGNALS

**Chip Select ( $\overline{CS}$ ):** The SPC is selected when  $\overline{CS}$  is low. It is only necessary to have  $\overline{CS}$  low during a command to the SPC. It is not necessary to hold  $\overline{CS}$  low for the duration of the speech data.

**Data Bus (SW 1-8):** This is an 8-bit parallel data bus which contains the starting address of the speech data.

Data bus inputs SW 1-SW 8 accept an 8-bit binary address which is the address of the word which is to be "spoken" from the DIGITALKER output. See the Master Word List (Table I) for the complete listing of words and their respective addresses. If the entire word list is not used, unused inputs must be connected to  $V_{SS}$ .

**Command Select (CMS):** This line specifies the two commands to the SPC.

CMS	Function
0	Reset interrupt and start speech sequence
1	Reset interrupt only

**Write Strobe ( $\overline{WR}$ ):** This line latches the starting address (SW 1-SW 8) into a register. On the rising edge of the  $\overline{WR}$ , the SPC starts execution of the command specified by CMS. The command sequence is shown in the timing waveform section. If a command to start a new speech sequence is issued during a speech sequence, the new speech sequence will be started immediately. When connecting  $\overline{WR}$  to a switch, it must be a single pole 2 position switch as shown on page 1.

**ROM Data (RDATA 1-8):** This is an 8-bit parallel data bus which contains the speech data from the speech ROM.

### OUTPUT SIGNALS

**Interrupt (INTR):** This signal goes high at the completion of any speech sequence. It is reset by the next valid command. It is also reset at power up.

**ROM Address (ADR 0-ADR 13):** This is a 14-bit parallel bus that supplies the address of the speech data to the speech ROM.

**ROM Enable ( $\overline{ROMEN}$ ):** For low power applications, this line can be used to drive a transistor that switches the supply for static speech ROMs. See ROM Data Timing.

**Speech Output (Speech Out):** This is the analog output that represents the speech data. See frequency response section.

### INPUT/OUTPUT SIGNALS

**Clock Input/Output (OSC IN, OSC OUT):** These two pins connect the main timing reference (crystal) to the SPC.

### PHRASE QUALITY

In normal human speech, the brain puts durations of silence between the words to make the sentence flow smoothly. Since several durations of silence are provided in the Master Word List, the actual quality of any phrase can be significantly improved by adding durations of silence (also assigned addresses) between the words. As one thinks about how the phrase is actually spoken, one might assume the approximate duration of silence between each word, and insert the closest duration of silence from the word list. A hint in this area would be that for words beginning with the letters, K, T, P, B, D, and G insert 80 milliseconds silence prior to the words, and for words ending in the same letters as above, 40 milliseconds silence following the word is recommended.

# Functional Description (Continued)

TABLE I. DT1056/DT1057\* MASTER WORD LIST

Word	8-Bit Binary Address		Word	8-Bit Binary Address		Word	8-Bit Binary Address	
	SW 8	SW 1		SW 8	SW 1		SW 8	SW 1
ABORT	0	0	FARAD	0	1	PER	0	1
ADD	0	0	FAST	0	1	PICO	0	1
ADJUST	0	0	FASTER	0	1	PLACE	0	1
ALARM	0	0	FIFTH	0	1	PRESS	0	1
ALERT	0	0	FIRE	0	1	PRESSURE	0	1
ALL	0	0	FIRST	0	1	QUARTER	0	1
ASK	0	0	FLOOR	0	1	RANGE	0	1
ASSISTANCE	0	0	FORWARD	0	1	REACH	0	1
ATTENTION	0	0	FROM	0	1	RECEIVE	0	1
BRAKE	0	0	GAS	0	1	RECORD	0	1
BUTTON	0	0	GET	0	1	REPLACE	0	1
BUY	0	0	GOING	0	1	REVERSE	0	1
CALL	0	0	HALF	0	1	ROOM	0	1
CAUTION	0	0	HELLO	0	1	SAFE	0	1
CHANGE	0	0	HELP	0	1	SECURE	0	1
CIRCUIT	0	0	HERTZ	0	1	SELECT	0	1
CLEAR	0	0	HOLD	0	1	SEND	0	1
CLOSE	0	0	INCORRECT	0	1	SERVICE	0	1
COMPLETE	0	0	INCREASE	0	1	SIDE	0	1
CONNECT	0	0	INTRUDER	0	1	SLOW	0	1
CONTINUE	0	0	JUST	0	1	SLOWER	0	1
COPY	0	0	KEY	0	1	SMOKE	0	1
CORRECT	0	0	LEVEL	0	1	SOUTH	0	1
DATE	0	0	LOAD	0	1	STATION	0	1
DAY	0	0	LOCK	0	1	SWITCH	0	1
DECREASE	0	0	MEG	0	1	SYSTEM	0	1
DEPOSIT	0	0	MEGA	0	1	TEST	0	1
DIAL	0	0	MICRO	0	1	TH (NOTE 2)	0	1
DIVIDE	0	0	MORE	0	1	THANK	0	1
DOOR	0	0	MOVE	0	1	THIRD	0	1
EAST	0	0	NANO	0	1	THIS	0	1
ED (NOTE 1)	0	0	NEED	0	1	TOTAL	0	1
ED (NOTE 1)	0	0	NEXT	0	1	TURN	0	1
ED (NOTE 1)	0	0	NO	0	1	USE	0	1
ED (NOTE 1)	0	0	NORMAL	0	1	UTH (NOTE 3)	0	1
EMERGENCY	0	0	NORTH	0	1	WAITING	0	1
END	0	0	NOT	0	1	WARNING	0	1
ENTER	0	0	NOTICE	0	1	WATER	0	1
ENTRY	0	0	OHMS	0	1	WEST	0	1
ER	0	0	ONWARD	0	1	SWITCH	0	1
EVACUATE	0	0	OPEN	0	1	WINDOW	1	0
EXIT	0	0	OPERATOR	0	1	YES	1	0
FAIL	0	0	OR	0	1	ZONE	1	0
FAILURE	0	0	PASS	0	1			

\* DT1056 is a complete kit including MM54104 SPC. DT1057 is SSR5 and SSR6 speech ROMs only.

**Note 1:** "ED" is a suffix that can be used to make any present tense word become a past tense word. The way we say "ED," however does vary from one word to the next. For that reason, we have offered 4 different "ED" sounds. It is suggested that each "ED" be tested with the desired word for best quality results. Address 31 "ED" or 32 "ED" should be used with words ending in "T" or "D," such as exit or load. Address 34 "ED" should be used with words ending with soft sounds such as ask. Address 33 "ED" should be used with all other words.

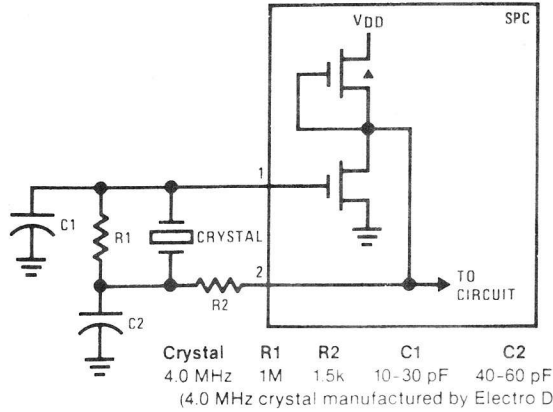
**Note 2:** "TH" is a suffix that can be added to words like six, seven, eight to form adjective words like sixth, seventh, eighth.

**Note 3:** "UTH" is a suffix that can be added to words like twenty, thirty, forty to form adjective words like thirtieth, fortieth, etc.

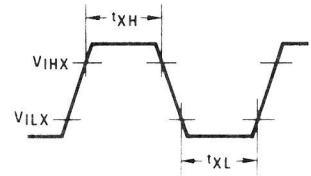
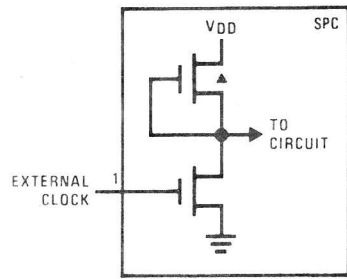
**Note 4:** Address 130 is the last legal address in this particular word list. Exceeding address 130 will produce pieces of unintelligible invalid speech data.

# Crystal Circuit Information

Typical Crystal Oscillator Network

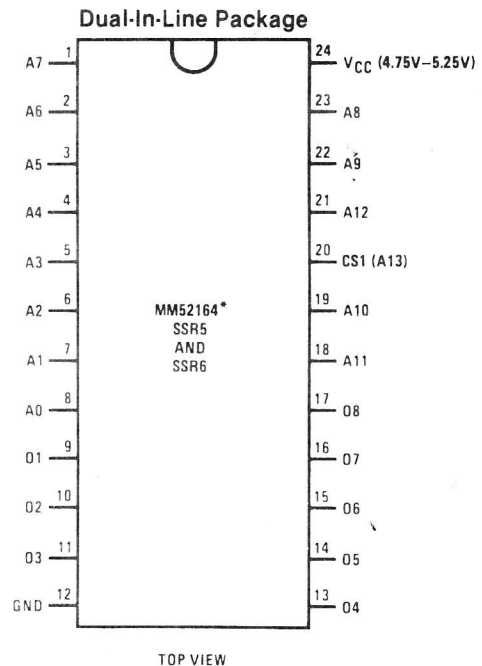
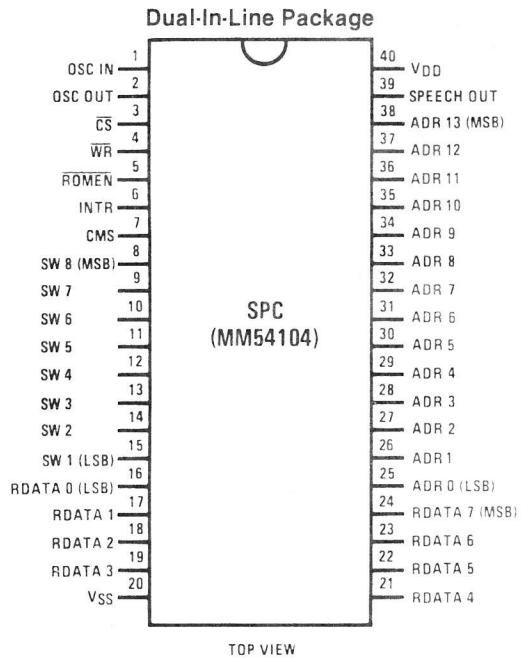
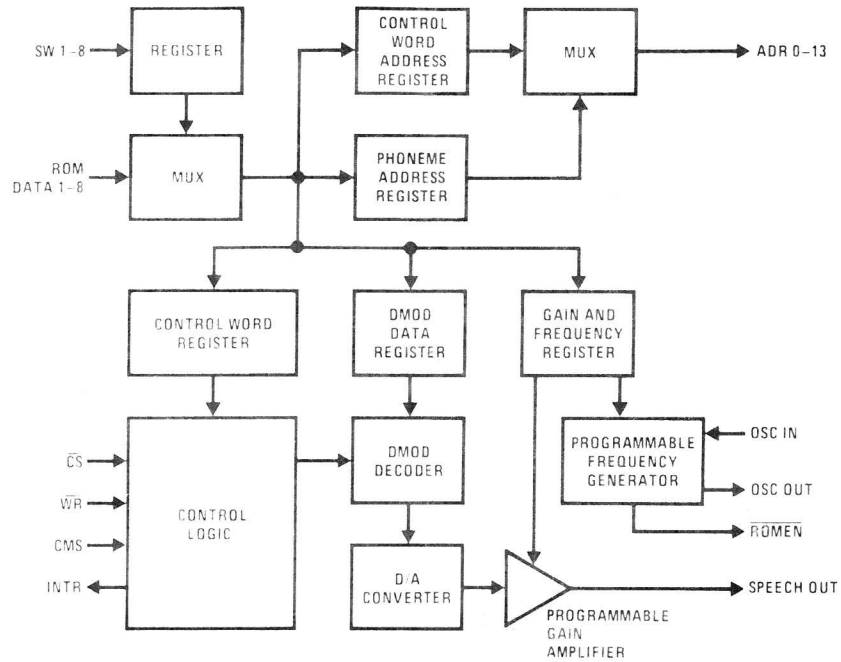


External Clock Input (4.0 MHz)



Timing	Min	Units
tXH	100	ns
tXL	100	ns

## SPC Block and Connection Diagrams

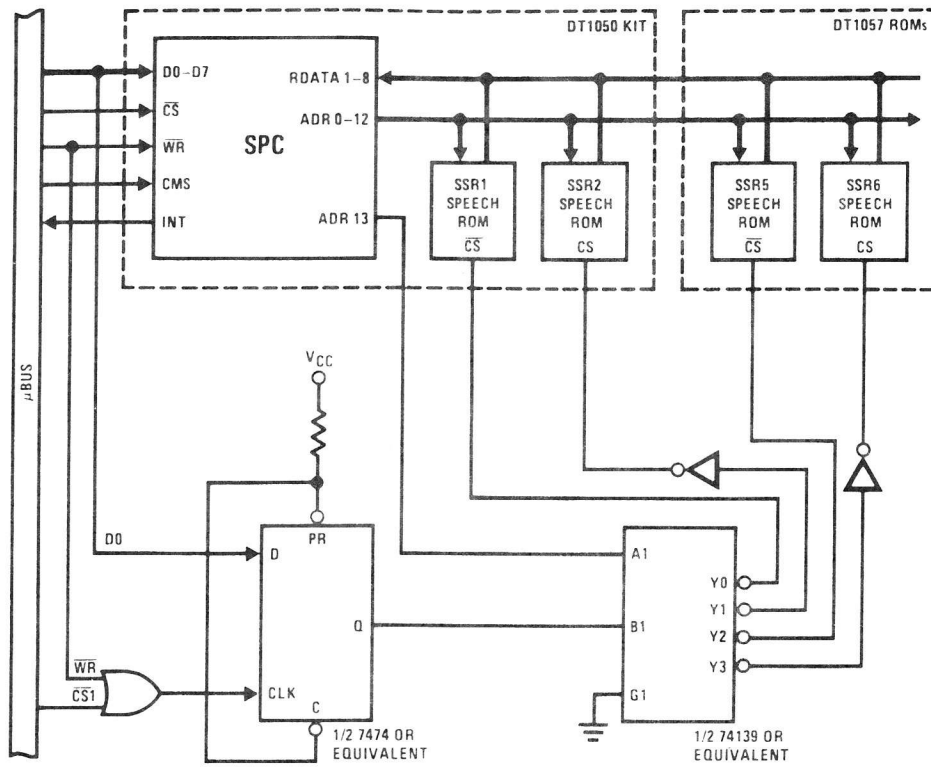


\* For specific ROM device information, see MM52164 data sheet.

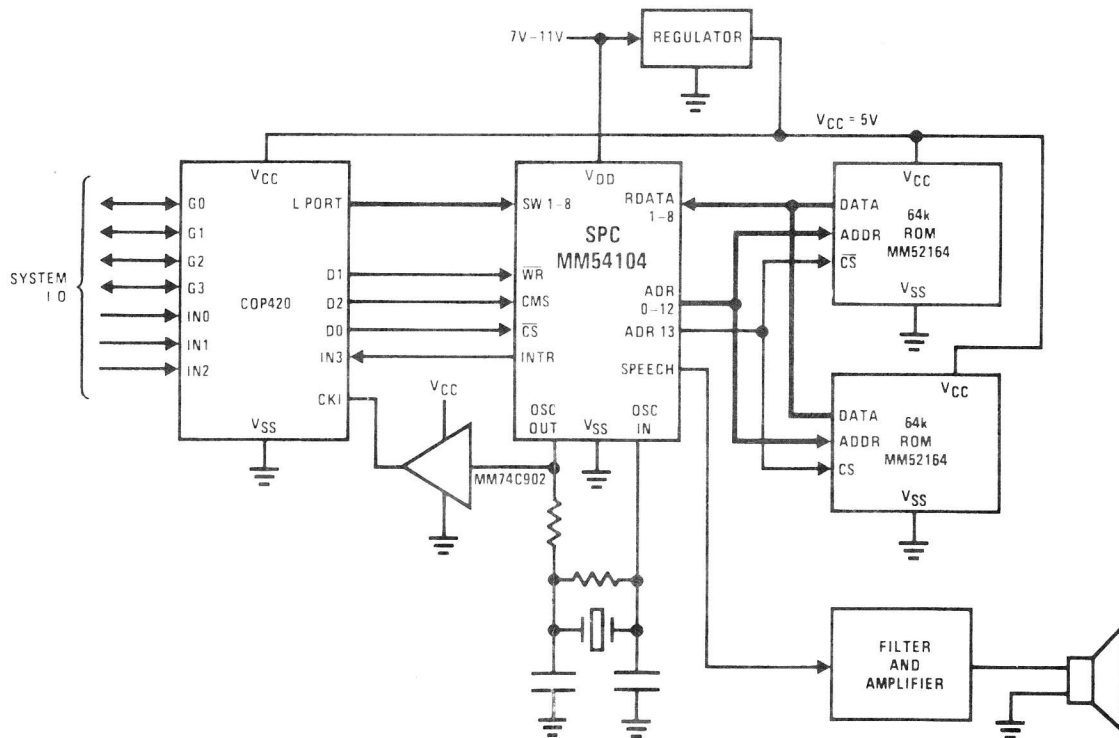


# Typical Applications (Continued)

## Integration of DT1057 ROMs and DT1050 Kit

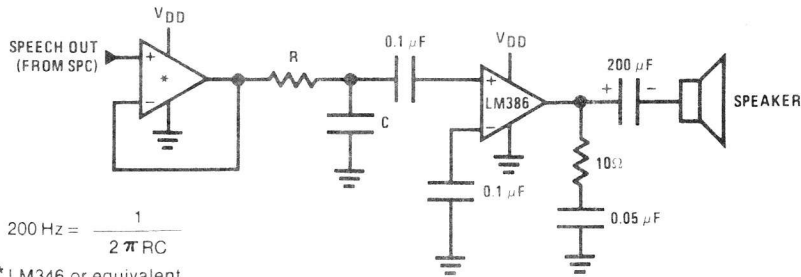


## DIGITALKER System Using COP420 Interface



## Typical Applications (Continued)

### Minimum Filter Circuit

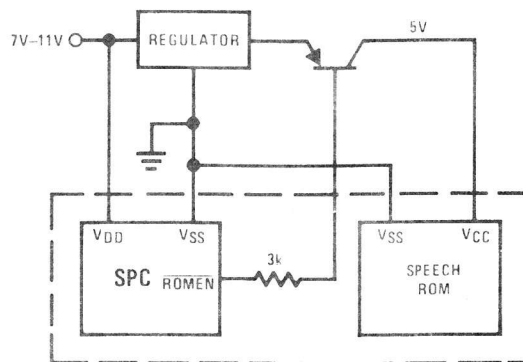


$$200 \text{ Hz} = \frac{1}{2\pi RC}$$

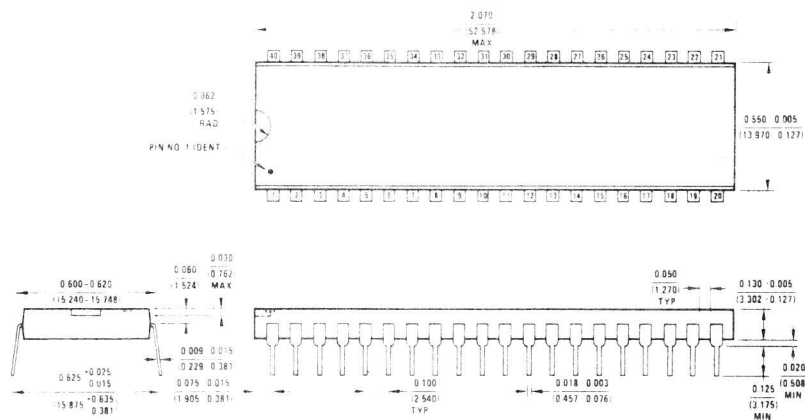
\* LM346 or equivalent

See MM54104 data sheet for additional filter information.

### Low Power Configuration Using Static ROM



## Physical Dimensions inches (millimeters)



Molded Dual-In-Line Package (N)  
NS Package Number N40A

## LIFE SUPPORT POLICY

NATIONAL'S PRODUCTS ARE NOT AUTHORIZED FOR USE AS CRITICAL COMPONENTS IN LIFE SUPPORT DEVICES OR SYSTEMS WITHOUT THE EXPRESS WRITTEN APPROVAL OF THE PRESIDENT OF NATIONAL SEMICONDUCTOR CORPORATION. As used herein:

1. Life support devices or systems are devices or systems which, (a) are intended for surgical implant into the body, or (b) support or sustain life, and whose failure to perform, when properly used in accordance with instructions for use provided in the labeling, can be reasonably expected to result in a significant injury to the user.
2. A critical component is any component of a life support device or system whose failure to perform can be reasonably expected to cause the failure of the life support device or system, or to affect its safety or effectiveness.



**National Semiconductor Corporation**  
2900 Semiconductor Drive  
Santa Clara, California 95051  
Tel: (408) 737-5000  
TWX: (910) 339-9249

**National Semiconductor GmbH**  
Eisenheimerstrasse 61  
8000 München 21  
West Germany  
Tel: (089) 576091  
Telex: 522772

**NS Japan K.K.**  
POB 4151 Shinjuku Center Building  
1-25-1 Nishi-Shinjuku, Shinjuku-ku  
Tokyo 160, Japan  
Tel: 33-349-0811  
Telex: 330 2016 NSCU J

**National Semiconductor (Hong Kong) Ltd**  
1st Floor  
Cheung Kong Electronic Bldg  
4 Hing Yip Street  
Kwun Tong  
Kowloon, Hong Kong  
Tel: 3-899235  
Telex: 43866 NSEHK HX  
Cable: NATSEMI HX

**NS Electronics Do Brasil**  
Avda Brigadero Faria Lima 844  
11 Andar Conjunto 1104  
Jardim Paulistano  
Sao Paulo, Brasil  
Telex: 1121008 CABINE SAO PAULO

**NS Electronics Pty. Ltd.**  
Cnr Stud Rd & Mtn Highway  
Bayswater, Victoria 3153  
Australia  
Tel: 03-729-6333  
Telex: AA32096